

Now Available for **SALE** from



AUBURN SERVICE CENTER

5001 S 11 MILE RD, AUBURN MI

- ◆ Located on US-10 2 ^{1/2} Miles Southwest of Auburn
- ◆ Includes 4.04 Acres of Land
- ◆ US-10 Expressway Frontage
- ◆ Large Conference Room with Fireplace

Rick DeKam, CCIM

Phone: 269.323.0717
Mobile: 269.207.5430
Email: rick@midwestrealty.com

Andrew Gyorkos

Phone: 269.321.5000
Mobile: 269.760.5201
Email: andrew@midwestrealty.com

2314 Helen Avenue
Portage, MI 49002

Real Estate For Sale At...

\$375,000

The information contained in this offering is believed to be accurate, but remains subject to errors, omissions, and/or withdrawal without prior notice. Prospective buyers should complete their own due diligence and should not rely on seller-provided materials or representations.



Now Available for **SALE** from



SALIENT FACTS

PROPERTY DESCRIPTION	This office building is centrally located near Downtown Auburn, Michigan, and is adjacent to US - 10. It is currently used as a National Boy Scouts of America "Scout Shop" and administration offices.
FEATURES	Lobby with large reception area; kitchen & breakroom; two bathrooms; (9) private offices with windows; central open office support area; large conference room with fireplace; park-like setting with outdoor pavilion.
SIZE	Building: 10,000 Sq Ft
LAND	4.04 Acres
SALE PRICE	\$375,000
PARKING SPACES	56 marked spaces on asphalt paved lot
UTILITIES	City of Auburn provides water, private septic drain field Consumers Energy provides gas and electric
YEAR BUILT	Constructed in 1972; renovated in 2008
MUNICIPALITY	Williams Township, Bay County
ZONING	Agricultural
PROPERTY TAXES	Currently Tax Exempt
TAX ID	140-027-100-010-00
LISTING AGENTS	Contact Midwest Realty Group for more details on this property.

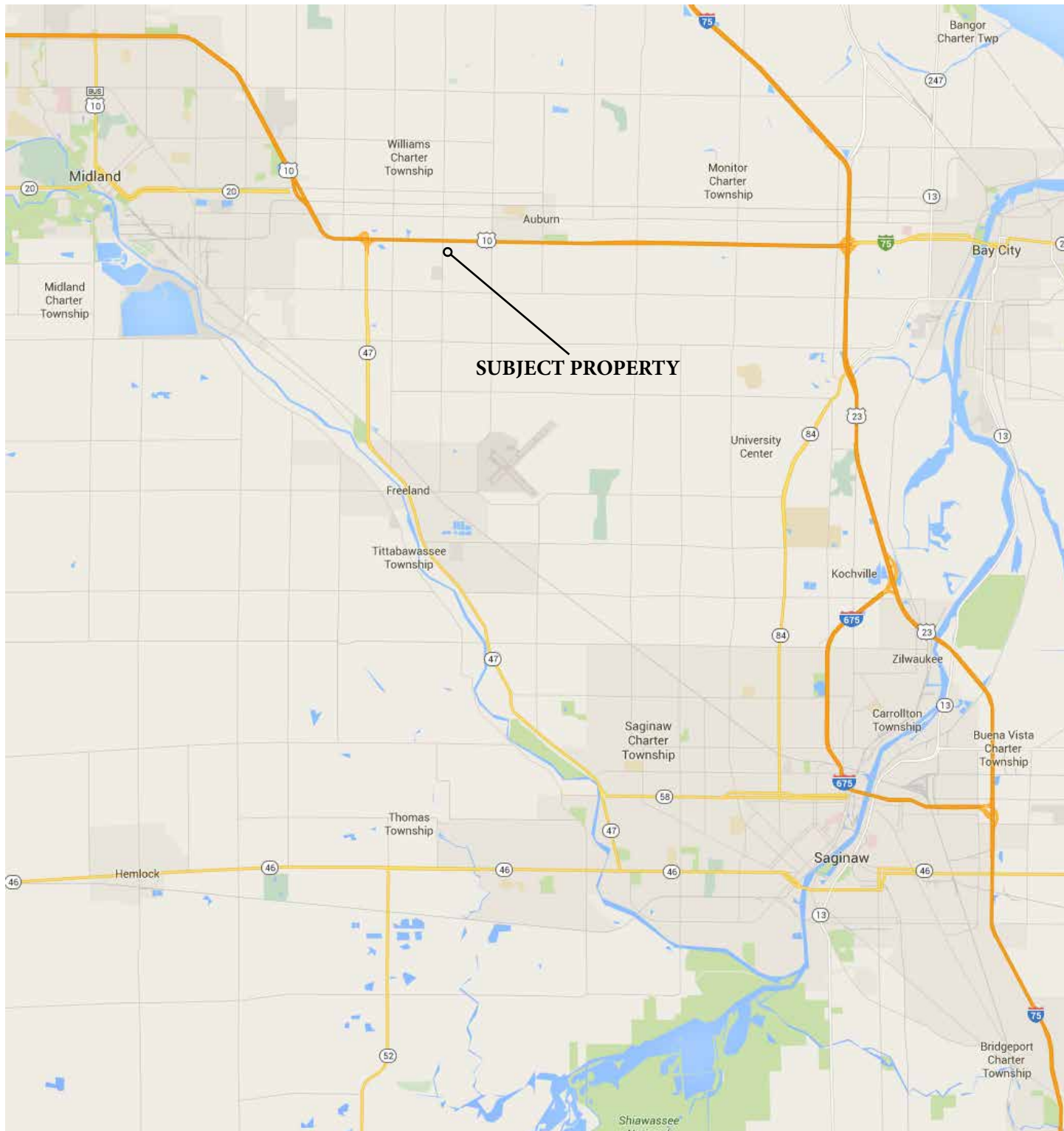
Agent: Rick DeKam, CCIM
Phone: (269) 323-0717
Mobile: (269) 207-5430
Email: rick@midwestrealty.com

Agent: Andrew Gyorkos
Phone: (269) 323-0717
Mobile: (269) 760-5201
Email: andrew@midwestrealty.com

Now Available for **SALE** from



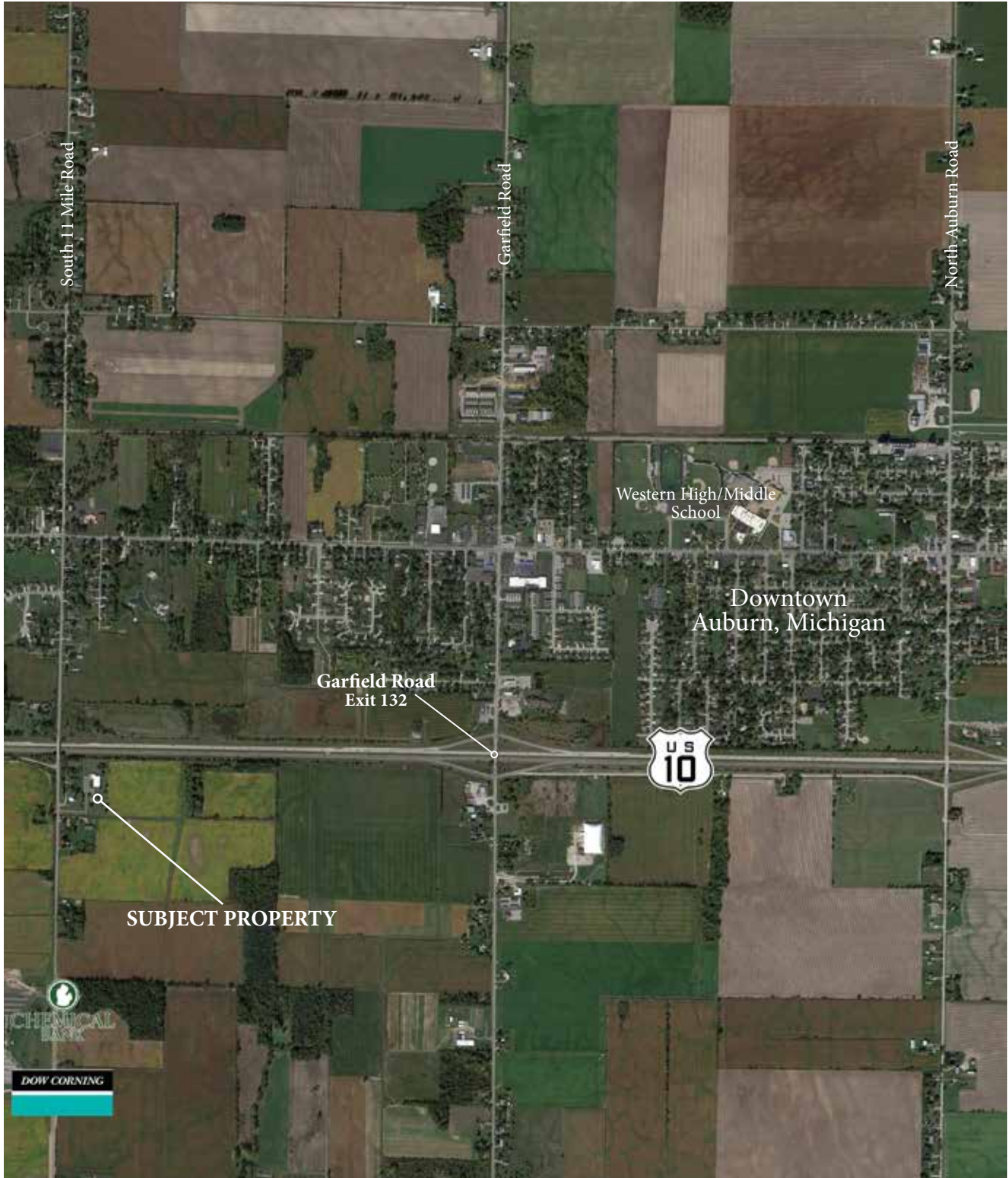
REGIONAL MAP



Now Available for **SALE** from



AREA MAP



Now Available for **SALE** from



SITE PLAN

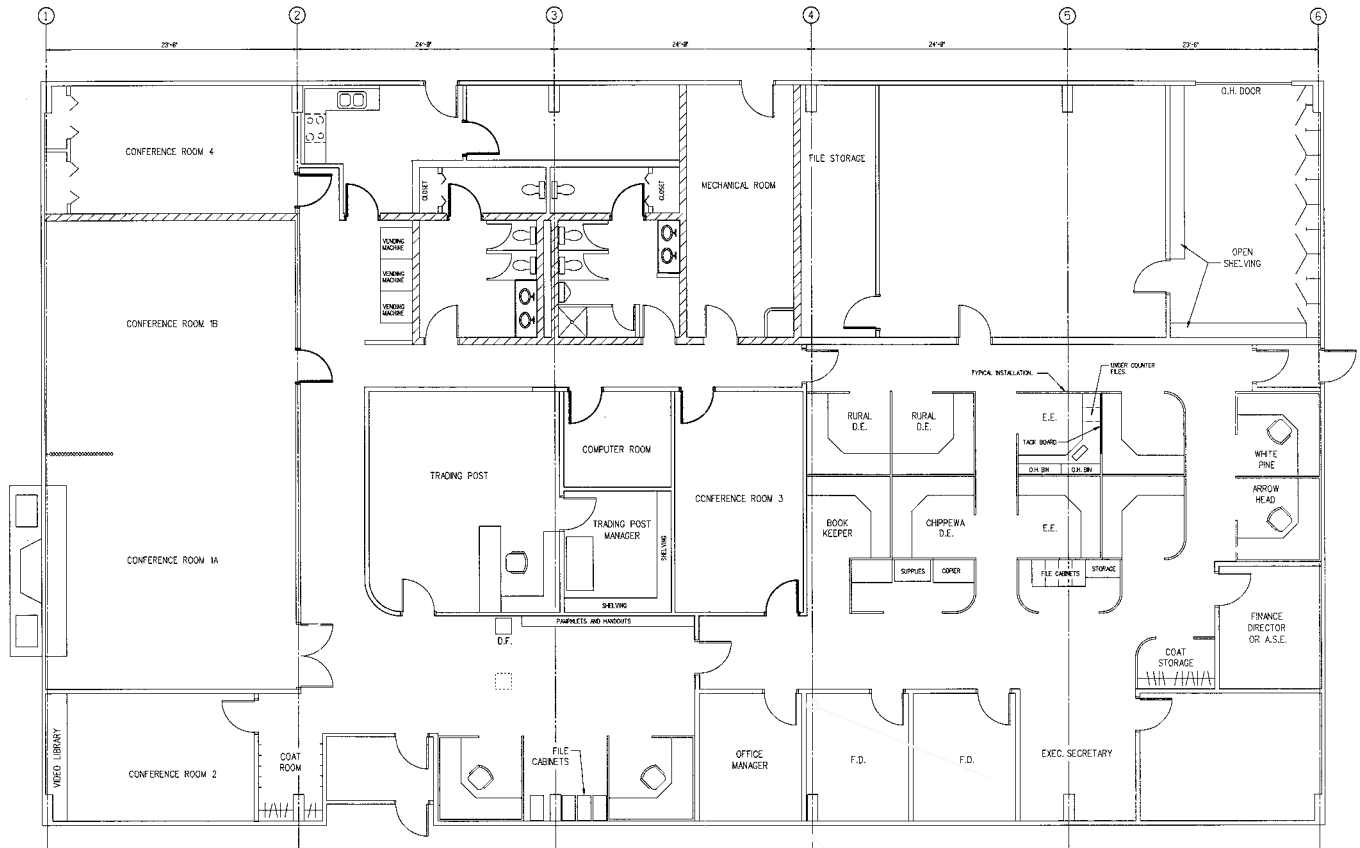


NOTE: The property boundaries illustrated above are believed to be accurate and are based upon the property owner's support. However, a buyer should still perform a new survey for precise boundaries and legal description.

Now Available for **SALE** from



FLOOR PLAN



Now Available for **SALE** from



PHOTOS



Now Available for **SALE** from  **MIDWEST
REALTY
GROUP**

PHOTOS

